



Rab 11B Polyclonal Antibody

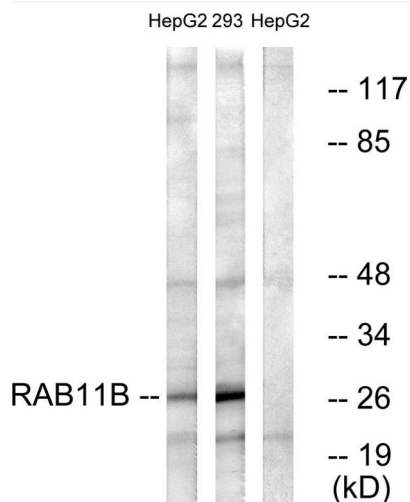
Catalog No	YP-Ab-16187
Isotype	IgG
Reactivity	Human;Mouse;Rat
Applications	WB;IHC
Gene Name	RAB11B
Protein Name	Ras-related protein Rab-11B
Immunogen	The antiserum was produced against synthesized peptide derived from human RAB11B. AA range:164-213
Specificity	Rab 11B Polyclonal Antibody detects endogenous levels of Rab 11B protein.
Formulation	Liquid in PBS containing 50% glycerol, 0.5% BSA and 0.02% sodium azide.
Source	Polyclonal, Rabbit,IgG
Purification	The antibody was affinity-purified from rabbit antiserum by affinity-chromatography using epitope-specific immunogen.
Dilution	WB 1:500-2000;IHC-p 1:50-300
Concentration	1 mg/ml
Purity	≥90%
Storage Stability	-20°C/1 year
Synonyms	RAB11B; YPT3; Ras-related protein Rab-11B; GTP-binding protein YPT3
Observed Band	28kD
Cell Pathway	Recycling endosome membrane ; Lipid-anchor ; Cytoplasmic side . Cytoplasmic vesicle, secretory vesicle, synaptic vesicle membrane ; Lipid-anchor ; Cytoplasmic side . Cytoplasmic vesicle, phagosome membrane ; Lipid-anchor ; Cytoplasmic side . Recruited to phagosomes containing S.aureus. .
Tissue Specificity	B-cell lymphoma,Brain,Cerebellum,Muscle,
Function	function:Possesses GTPase activity.,similarity:Belongs to the small GTPase superfamily. Rab family.,subunit:Interacts with RAB11FIP1, RAB11FIP2, RAB11FIP3 and RAB11FIP4.,
Background	The Ras superfamily of small GTP-binding proteins, which includes the Ras (see MIM 190020), Ral (see MIM 179550), Rho (see MIM 165390), Rap (see MIM 179520), and Rab (see MIM 179508) families, is involved in controlling a diverse set of essential cellular functions. The Rab family, including RAB11B, appears to play a critical role in regulating exocytotic and endocytotic pathways (summary by Zhu et al., 1994 [PubMed 7811277]).[supplied by OMIM, Nov 2010],
matters needing attention	Avoid repeated freezing and thawing!



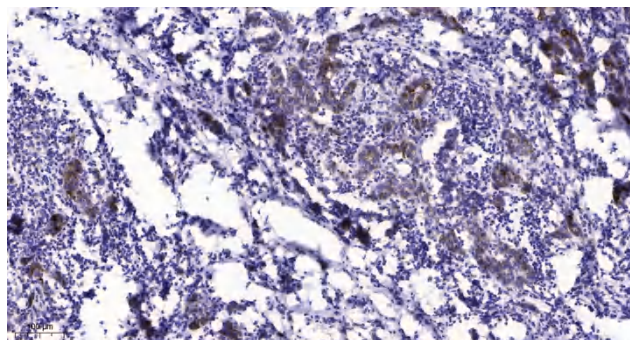
Usage suggestions

This product can be used in immunological reaction related experiments. For more information, please consult technical personnel.

Products Images



Western blot analysis of lysates from HepG2 and 293 cells, using RAB11B Antibody. The lane on the right is blocked with the synthesized peptide.



Immunohistochemical analysis of paraffin-embedded human Breast cancer. 1, Antibody was diluted at 1:200(4° overnight). 2, Tris-EDTA,pH9.0 was used for antigen retrieval. 3,Secondary antibody was diluted at 1:200(room temperature, 45min).